

COMMAND LIGHT

TRIDENT TRIPOD



Effective October 2024
This guide supersedes all previous versions

3842 Redman Drive
Fort Collins, CO 80524

MODELS COVERED:
T40D T50D

1-800-797-7974
www.CommandLight.com

THANK YOU

Please allow us to express a simple thank you for investing in a **COMMAND LIGHT** product. As a company we are dedicated to producing the very best and most versatile flood lighting package available. We take great pride in the quality of our work and hope that you will find many years of satisfaction from the use of this equipment.

Should you have any problems with your product please do not hesitate to contact us.



3842 Redman Drive
Fort Collins, CO 80524

PHONE: 1-800-797-7974

FAX: 1-970-297-7099

WEB: www.CommandLight.com



DANGER

PERSONAL RESPONSIBILITY CODE


The member companies of FEMSA that provide emergency response equipment and services want responders to know and understand the following:

1. Firefighting and Emergency Response are inherently dangerous activities requiring proper training in their hazards and the use of extreme caution at all times.
2. It is your responsibility to read and understand any user's instructions, including purpose and limitations, provided with any piece of equipment you may be called upon to use.
3. It is your responsibility to know that you have been properly trained in Firefighting and/or Emergency Response and in the use, precautions, and care of any equipment you may be called upon to use.
4. It is your responsibility to be in proper physical condition and to maintain the personal skill level required to operate any equipment you may be called upon to use.
5. It is your responsibility to know that your equipment is in operable condition and has been maintained in accordance with the manufacturer's instructions.
6. Failure to follow these guidelines may result in death, burns or other severe injury.



Fire and Emergency Manufacturers and Services Association, Inc.
P.O. Box 147, Lynnfield, MA 01940 www.FEMSA.org

Copyright 2006 FEMSA. All Rights Reserved

 **WARNING** Read this manual before installing or operating the
TRIDENT TRIPOD
Save this guide for future reference.

Contents

Limited Warranty	4
Breakage or Damage During Shipment	5
Installation.....	6
General Description and Specifications	7-8
Operation.....	9
Charging the Battery Packs.....	10-11
Wiring Schematic.....	12

COMMAND LIGHT 5 YEAR LIMITED WARRANTY

COMMAND LIGHT products* come with an industry leading 5-year warranty against any defects in materials and workmanship when used and operated for a period of five years. The responsibility of **COMMAND LIGHT** under this limited warranty is limited to the repair and replacement of parts found to be defective by **COMMAND LIGHT**.

Any parts damaged in shipping or by improper installation, overloading, abuse, or accident of any type or cause are not covered by this warranty. If equipment has been damaged in transit, a claim should be made against the carrier within three days, as we assume no responsibility for such damage.

If during this time period, you have any malfunctions not related to misuse, accident, neglect, or normal wear and tear, please take the following steps in order to have your light tower serviced under the **COMMAND LIGHT** warranty.

1. Contact us immediately for initial diagnosis at info@commandlight.com or 800-797- 7974; or if parts are needed contact parts@commandlight.com.
2. You will need to have immediate access to the light tower and the serial number. This process can be done by individuals with little mechanical ability. (involves pushing buttons and telling us what the light tower is doing or not doing)
3. We then send parts (if needed) and have an authorized technician dispatched (if needed) with a written work authorization number and a base number of hours allotted to do repair. Hourly rates for service are to be determined at the time of authorization by **COMMAND LIGHT**, travel time is paid at a maximum of 50% of the authorized service rate.
4. We remain available for service support via phone, email, or video conference while the technician completes the repair, also to extend the original time allotted if additional issues arise. Immediate support cannot be guaranteed unless a time is scheduled prior to service.
5. Let us know when the repair is completed and reference the work authorization number. Email an invoice to info@commandlight.com or parts@commandlight.com. If you are unable to create an invoice email us for instructions for payment. Make sure any parts we have requested to be returned have been shipped back to the provided shipping address. If a return label is issued it must be used.
6. Finally, we will pay by mailing a check or crediting the account of the person, department, or company doing the repair. Payments will not be made until all requested parts have been returned.

Please contact us as soon as problems arise in order to execute our warranty. We must have knowledge of the issue and provide a work authorization in order to pay or reimburse labor or travel time.

Any unauthorized service voids this warranty. No work is authorized until written consent is provided by **COMMAND LIGHT**.

Contact Us Early – before any work is done – We’d love to help!

*excludes light producing components (bulbs, lasers, LEDs) These components may come with their own manufacturer warranty. Contact us and we can help get it.

Breakage or Damage During Shipment

The transportation company is fully responsible for all shipping damage and will resolve problems promptly if you handle it correctly. Please read these instructions carefully.

Examine the contents of all shipping cases. If you find any damage, call your transportation agent at once and have them make a description on the freight or express bill describing the damage and the number of pieces. Then contact us and we will send you the original bill of lading. Also promptly contact the transportation company and follow their procedure for filing a claim. Each company will have a unique procedure to follow.

Please note, we cannot and will not enter claims for damages. If we filed claim here, it would be sent to your local freight agent for verification and investigation. This time can be saved by you filing the claim directly. Every consignee is on the ground floor, in contact with the local agent who inspects the damaged goods, and thus, each claim can be given individual attention.

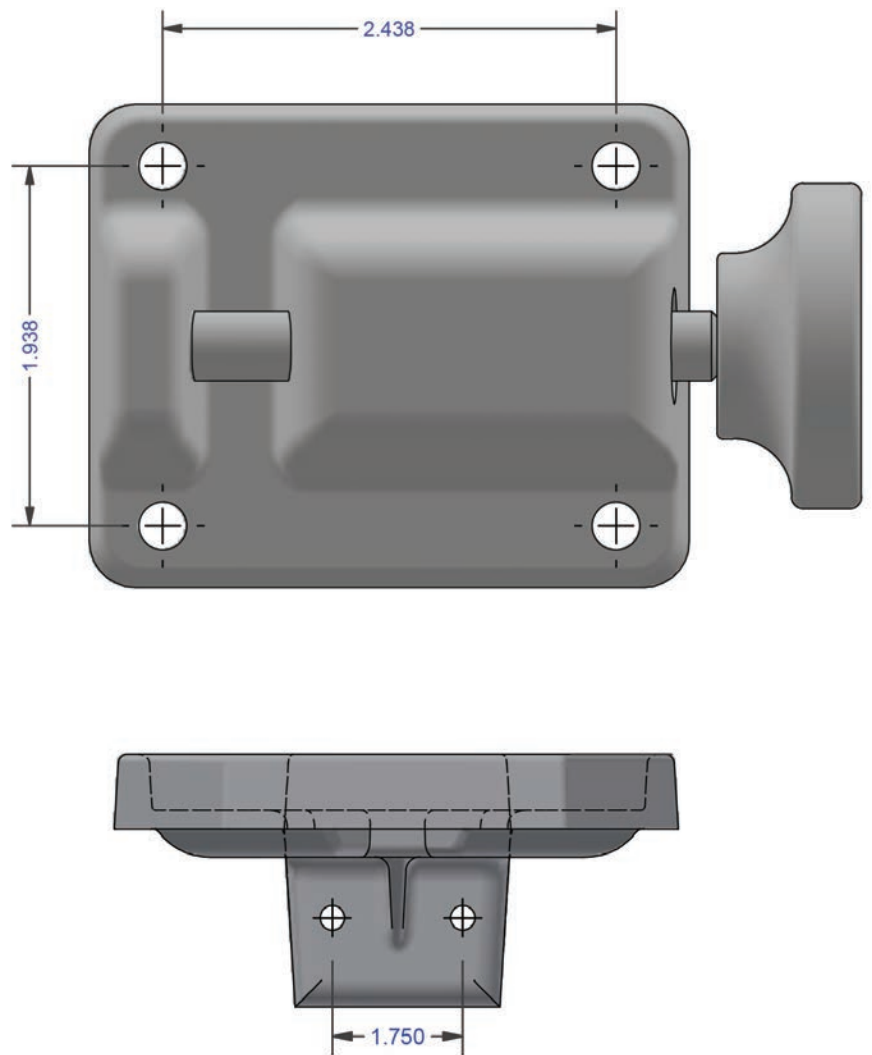
Since our goods are packed to comply with the regulations of all railroad, truck, and express companies, we cannot allow deduction from any invoice because of any damage, however, be sure to file your claim promptly. Our goods are sold F.O.B. factory. We take receipt from the transportation company certifying that the goods were delivered to them in good order and our responsibility ceases.

It is seldom that any breakage or damage occurs in any of our shipments and in no case will the customer be out any expense if they follow the above instructions.

Be sure to keep all damaged goods subject to examination of the truck or express company inspector, who may call on you some time later. These damaged goods, of course, will belong to them, and they will inform you what to do with them. If you dispose of these damaged goods, your claim may not be paid.

Mounting Bracket Installation

- Mount the base mounting bracket using (2) 5/16" bolts, (4) 5/16" flat washers, (2) 5/16" nylock nuts, and the included gasket, making sure it is level with the vehicle.
- Lock the quick disconnect onto the tripod, place the tripod into the base mounting bracket. Use the tripod to mark the (4) holes for the quick disconnect, making sure the tripod is completely vertical and level with the vehicle.
- Mount the quick disconnect using (4) 1/4" bolts, (4) 1/4" flat washers, (4) 1/4" nylock nuts, and and the included gasket.



General Description and Specifications

The Trident Tripod is specifically designed to provide convenient and portable high intensity emergency scene lighting. As with any electromechanical device, take precautionary steps to ensure safe operation.

MODEL	LIGHTING	POWER REQ.	WEIGHT	TOTAL OUTPUT
TXXD-AR-BX	Akron Revel SL x 1****	110W	25 lbs	14,000 lumens
TXXD-AX-BX	Akron Revel XL x 1****	220W	35 lbs	20,000 lumens
TXXD-HE-BX	FireTech Guardian Elite	120W	30 lbs	10,130 lumens
TXXD-CH-BX	FireTech Helios x 1	60W	30 lbs	20,260 lumens
TXXD-FN-BX	FRC Mini Spectra x 1	130W	35 lbs	20,261 lumens
TXXD-FR-BX	FRC Radiant Command x 1	120W	35 lbs	14,000 lumens
TXXD-FS-BX	FRC Spectra x 1	220W	30 lbs	28,000 lumens
TXXD-W1-BX	Whelen PCH1 x 1	75W	25 lbs	14,000 lumens
TXXD-W2-BX	Whelen PFH2 x 1	150W	30 lbs	28,000 lumens
TXXD-LB-BX	Feniex Light Bar***	60W	35 lbs	Arrow patterns and floodlight
TXXD-FBA-BX	Amber Federal Message Bar	90W	35 lbs	Digital message in amber
TXXD-FBB-BX	Blue Federal Message Bar	90W	35 lbs	Digital message in amber

Weights listed with no options.

Estimated Battery Run Time

Model	-BD 9Ah	-BD 12Ah	-BD 15Ah	Makita XGT 4Ah	Makita XGT 5Ah	Makita XGT 8Ah	Milwaukee RedLithium 3Ah	Milwaukee RedLithium 5Ah	HURST® EWXT / E3™ 5Ah	HURST® EWXT / E3™ 9Ah
TXXD-AR-BX	85 min	110 min	132 min	75 min	93 min	135 min	64 min	102 min	58 min	88 min
TXXD-AX-BX	42 min	55 min	66 min	37 min	46 min	69 min	32 min	51 min	29 min	44 min
TXXD-HE-BX	86 min	114 min	135 min	76 min	92 min	136 min	68 min	107 min	X	X
TXXD-CH-BX	135 min	175 min	210 min	94 min	150 min	220 min	96 min	153 min	X	X
TXXD-FN-BX	79 min	105 min	126 min	70 min	85 min	125 min	62 min	99 min	X	X
TXXD-FR-BX	86 min	114 min	135 min	76 min	92 min	132 min	68 min	107 min	X	X
TXXD-FS-BX	49 min	64 min	75 min	40 min	50 min	74 min	34 min	54 min	X	X
TXXD-W1-BX	145 min	192 min	225 min	130 min	160 min	235 min	105 min	172 min	X	X
TXXD-W2-BX	74 min	96 min	112 min	65 min	81 min	122 min	54 min	86 min	X	X
TXXD-LB-BX	150 min	200 min	235 min	120 min	150 min	220 min	100 min	165 min	165 min	300 min
TXXD-FBA-BX	100 min	133 min	155 min	80 min	100 min	145 min	67 min	110 min	110 min	200 min
TXXD-FBB-BX	100 min	133 min	155 min	80 min	100 min	145 min	67 min	110 min	110 min	200 min

Reported run times based on fully charged batteries at 70° F; temperature and battery condition can impact tripod performance.

Light blinks three times to warn of low-battery conditions.

Light/message board run times based on floodlight pattern. Multiply minutes by 2 for average arrow patterns.

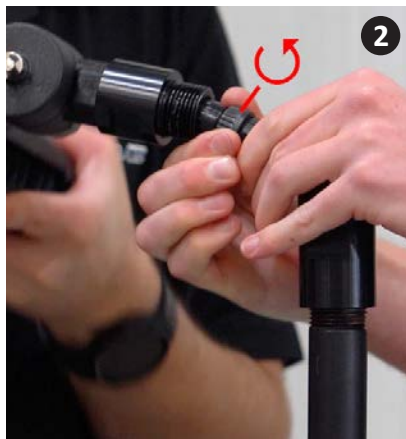
Operation

- Loosen the main knob and extend the legs as far as possible for the best stability and height, tighten the knob to lock the legs in place.
- The rear leg can be extended for use on uneven surfaces. Loosen the extension leg knob and extend the foot out to the desired length, keeping the mast of the tripod as vertical as possible, then tighten the knob.
- For added stability in high wind conditions or extreme terrain place sandbags at the base of the legs.
- Insert (1) battery into the battery receiver until it clicks.
- Battery removal will get easier with more remove/replace cycles.
- Adjust the light angle by using the swivel directly below the light fixture.
- Loosen the lock collar at the top of the primary mast by turning it counterclockwise. Extend the inner mast to the desired height and tighten the lock collar by turning it clockwise. Reduce glare by extending the inner mast completely.
- Use caution not to direct the light in a way that will inhibit other's visibility.
- Press the power button on the battery receiver once to turn on the light. The light fixture will blink three times to warn of low-battery conditions.
- If using truck power, insert the truck power connector into the battery receiver and the truck power outlet located on the vehicle. The light will turn on as soon as everything is connected, the power button is not used during truck power operation. There may be an in-cab power button or switch that will turn power on and off to the power outlet.
- If using shore power, insert the shore power connector into the battery receiver and use an extension cord to connect to 115V AC or 220V AC power source. The light will turn on as soon as everything is connected, the power button is not used during shore power operation.
- Before transporting, be sure the lock collar and all knobs are tightened after lowering the inner mast and folding in the legs.

1.) Light fixtures can be removed from the tripod by holding the upper coupler and inner mast while twisting the lower coupler. 1-1/4" or 32mm wrenches can be used to help loosen the couplers.



2.) Once the couplers are apart, twist the locking wire connector counterclockwise to disconnect the light wires.



This allows storage of the light head in a different location than the tripod and the use of multiple different light heads or light bars with a single tripod.



Charging the Battery Packs:







DeWalt® WARNING

Remove the DeWalt FlexVolt battery from the tripod. Insert in DeWalt Charger. Use only DeWalt brand battery chargers.

Using DeWalt AC Fast Charger, batteries will recharge in 60-120 minutes, depending on Amp- Hour rating.

Other DeWalt chargers, including units that work with vehicle DC power, may take longer to fully charge the batteries.

Charge indicators

	Charging	-----	
	Fully Charged	————	
	Hot/Cold Pack Delay	- - - ———	

Milwaukee® M28 WARNING

Remove the Milwaukee battery from the tripod. Insert in Milwaukee Charger. Use only Milwaukee brand battery chargers.

When the battery pack temperature is outside the charging range (40-105°F or 5-40°C), the red light on the charger will flash and the battery will not charge. Once the battery pack is within the acceptable temperature range, normal charging will take place.

Using the Milwaukee SuperCharger™, a 12 Amp hour battery will recharge in 60 minutes and an 8 Amp hour battery will recharge in 45 minutes.

Other Milwaukee chargers, including units that work with vehicle DC power, may take longer to fully charge the batteries.

CAUTION

*DeWalt Milwaukee M28

- Never store or charge the battery pack below 40°F (4°C) or above 105°F (41°C) or in direct sunlight.
- Never use/charge chargers or batteries in explosive atmospheres.
- Never attempt to open the battery pack. If cracked or damaged, return it to a service center for recycling.
- Do not splash or immerse charger in water or other liquids.

Charging the Battery Packs:

HURST® WARNING

Remove the battery from the tripod. Insert in HURST brand chargers only.

When the battery pack temperature is outside the charging range (25-105°F or 4-40°C), the red light on the charger will flash and the battery will not charge.

Once the battery pack is within the acceptable temperature range, normal charging will take place.

Using the HURST charger, a 9Ah battery will recharge in 150 minutes and 5Ah battery will recharge in 100 minutes.

Makita® WARNING

Remove the battery from the tripod. Insert in Makita Charger. Use only Makita XGT® brand battery chargers.

When the battery pack temperature is outside the charging range (40-105°F or 5-40°C), the red light on the charger will flash and the battery will not charge.

Once the battery pack is within the acceptable temperature range, normal charging will take place.

Using the Makita Rapid Optimum Charger, a 4.0 Amp hour battery will recharge in 45 minutes and a 5.0 Amp hour battery will recharge in 50 minutes.

Other Makita chargers, including units that work with vehicle DC power, may take longer to fully charge the batteries.

CAUTION

*HURST Makita

- Never store or charge the battery pack below 40°F (4°C) or above 105°F (41°C) or in direct sunlight.
- Never use/charge chargers or batteries in explosive atmospheres.
- Never attempt to open the battery pack. If cracked or damaged, return it to a service center for recycling.
- Do not splash or immerse charger in water or other liquids.

Wiring Schematic

